

Wärmetauscher AUSTRIA

POWER **S**SOLAR

THERMISCHE HÖCHSTLEISTUNG MIT DER KRAFT VON EXPERTEN

www.power-solar.at / office@power-solar.at

Tel.: +43 (0) 7229-81 800

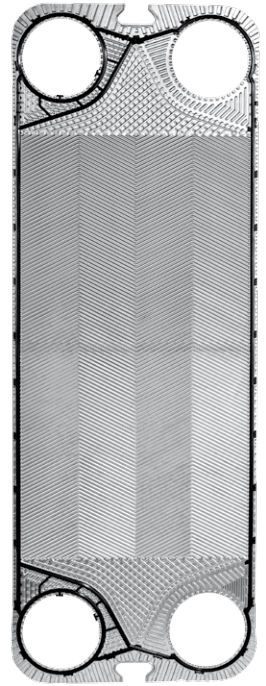
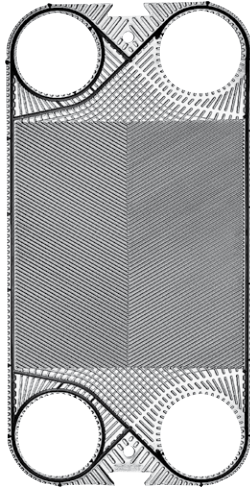


PRODUCT RANGE DN 200+

STANDARD OR CUSTOMIZED

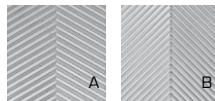
Wärmetauscher AUSTRIA

POWER **SOLAR**



Product Range	S650+		S990+	
Exchange area [m ²]	0,606		0,972	
Width [mm]	678		668	
Height [mm]	1340		1825	
Connections diameter	DN200 8"		DN200 8"	
Channel capacity [l]	2,109		2,399	
Tightening quote [mm]	3,3		3,1	
Plate weight (with gasket) [Kg]	3,18		4,5	
Corrugation angle	A/B		A/B	
Max. water flowrate [m ³ /h]	800		730	
PS=> Max working pressure [bar]	10	16	10	16
PT=> Max test pressure, EXEMPT* [bar]	15	21	15	21
PT=> Max test pressure, PED [bar]	16	26	16	26

Ex art. 3.3 D.Lgs. 93 of 25/02/2000 in accordance with Directive 97/23.
Announced pressures are referred to AISI 316L plates.



Plates are available in two thermal lengths (A/B)

DN32

DN50

DN65

DN100

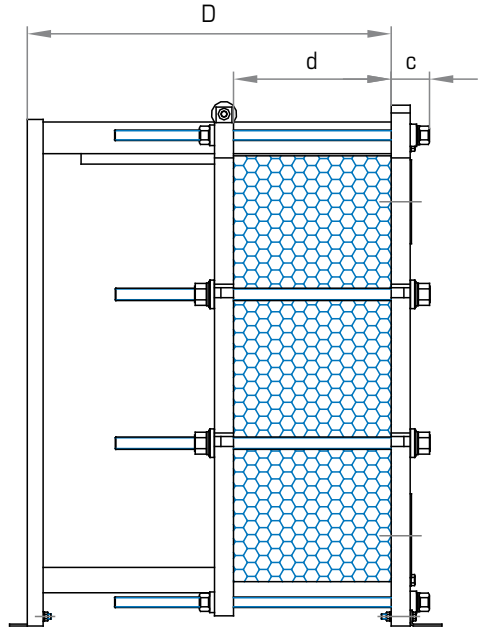
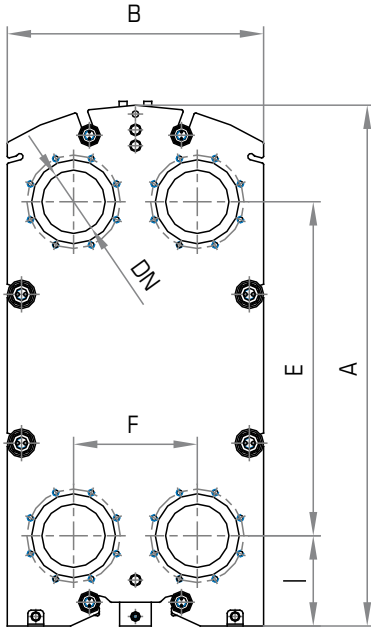
DN150

DN200

All data and drawings herewith described can be changed without prior notice and are not binding for the manufacturer

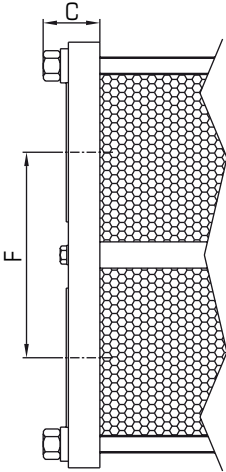
Wärmetauscher AUSTRIA

POWER **SOLAR**



	S650+				S990+			
A	1645				2206	2190		
B	810				790			
E	1055				1536			
F	391				396			
I	285				285			
Np max	151	251	351	551	151	251	351	551
D max	1150	1750	2150	3060	1160	1760	2160	3060
d (A-A)	3,3 x Np				3,1 x Np			
DN	DN200 8"				DN200 8"			
A-A B-B C-C E-E U-U V-V	PS 10		PS 16		PS 10		PS 16	
C	123		133		111		121	

All dimensions are in mm - Np = number of plates



A-A

Studded ports
Rubber lining
EN 1092-1

B-B

Studded ports
AISI 316 lining
EN 1092-1

C-C

Studded ports
Rubber lining
ANSI 150 lbs
metric thread

E-E

Studded ports
AISI 316 lining
ANSI 150 lbs
metric thread

U-U

Studded ports
Ulined EN 1092-1

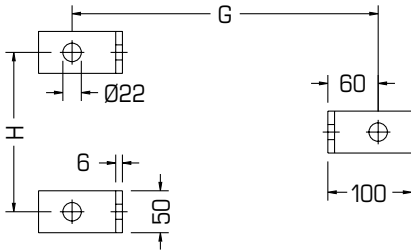
V-V

Studded ports
Ulined ANSI 150
lbs metric thread

Wärmetauscher AUSTRIA

POWER  **S**OLAR 

Support Feet



GxH	PS10	PS16
S650+		
Max 151p	1286x630	1296x630
Max 251p	1886x630	1896x630
Max 351p	2286x630	2296x630
Max 551p	3196x630	3196x630
GxH	PS10	PS16
S990+		
Max 151p	1277x630	1287x630
Max 251p	1877x630	1887x630
Max 351p	2277x630	2287x630
Max 551p	3177x630	3187x630

Materials

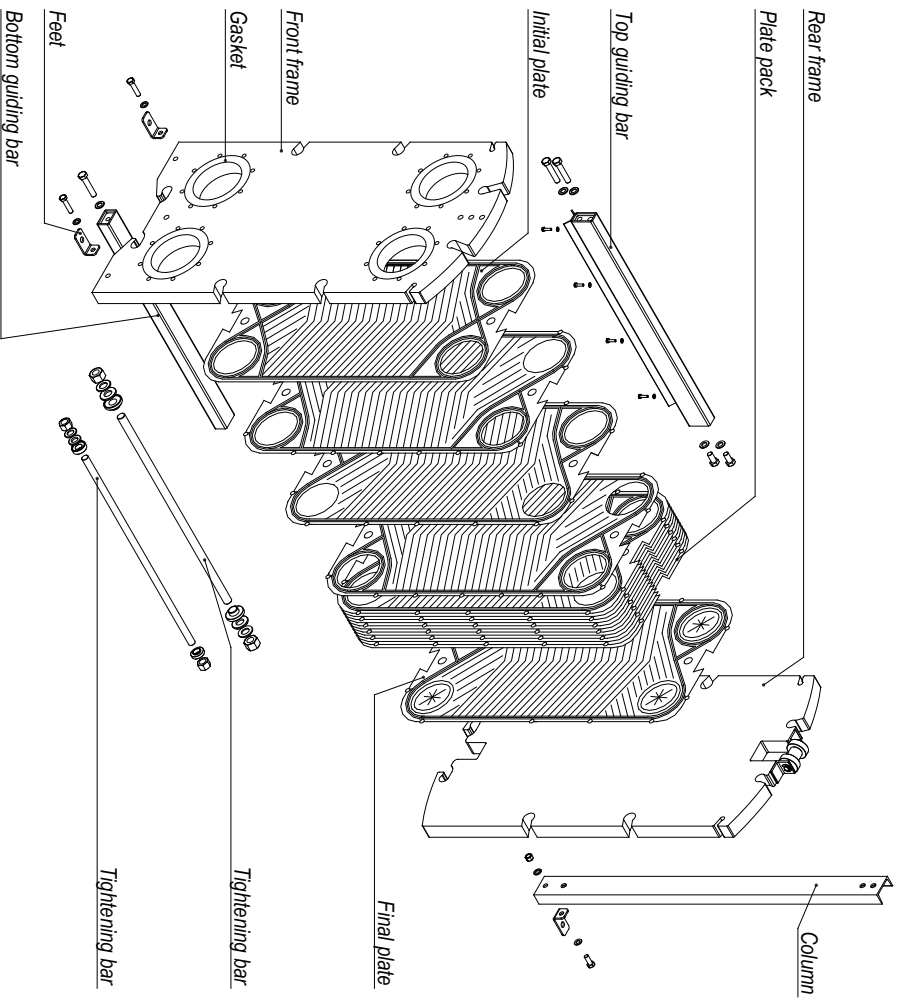
		S650+	S990+
Plate	AISI 304	●	●
	AISI 316L	●	●
	254 SMO		
	Titanium	●	●
Gasket	NBR	●	●
	EPDM Prx.	●	●
	FPM	●	
	HNBR	●	
Frame	Carbon steel	●	●
	AISI 304, cladde		
Connection type	A-A B-B C-C E-E U-U V-V	●	●

Gaskets material maximum temperatures

NBR	-20 °C	110 °C
EPDM Prx.	-20 °C	160 °C
FPM	-20 °C	200 °C
HNBR	-20 °C	160 °C

The temperatures must be considered not applicable in all working conditions.

Component blow-up drawings Models S650+, S990+



CERTIFICATIONS APPROVALS

ISO 9001



- ISO 9001
Quality Management



- PED 97/23/EC
Pressure Equipment Directive
Module B, D1 & D (up to Risk Cat. IV)



- ACS
Attestation de Conformité Sanitaire



- GOST-R
Certificate of Conformity



- OHSAS 18001
Occupational Health and Safety



- ISO 14001
Environmental Management

MADE IN ITALY

Wärmetauscher AUSTRIA
POWER SOLAR

TERMINISCHE HOCHSTLEISTUNG MIT DER KRAFT VON EXPERTEN

www.power-solar.at / office@power-solar.at

Tel.: +43 (0) 7229-81 800