

Wärmetauscher AUSTRIA

POWER **S**OLAR

THERMISCHE HÖCHSTLEISTUNG MIT DER KRAFT VON EXPERTEN

www.power-solar.at / office@power-solar.at

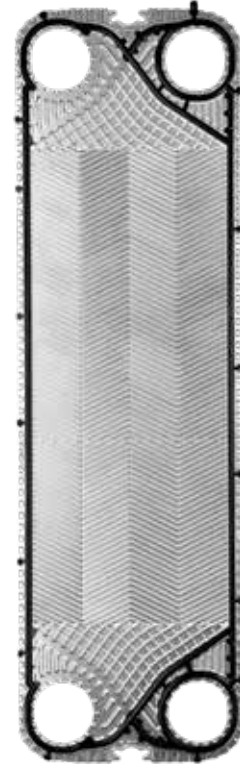
Tel.: +43 (0) 7229-81 800



PRODUCT RANGE DN 65+

Wärmetauscher AUSTRIA

POWER SOLAR

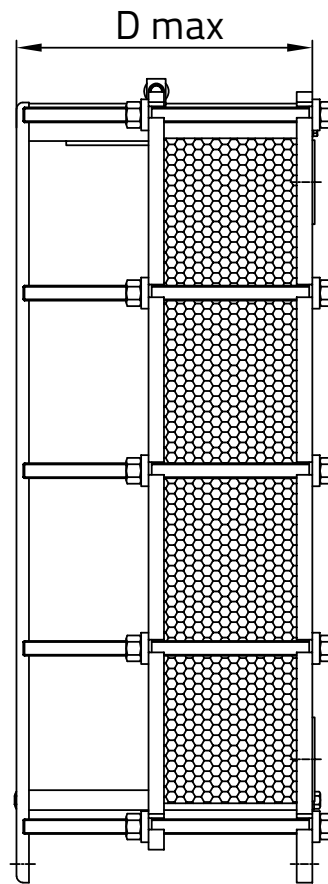
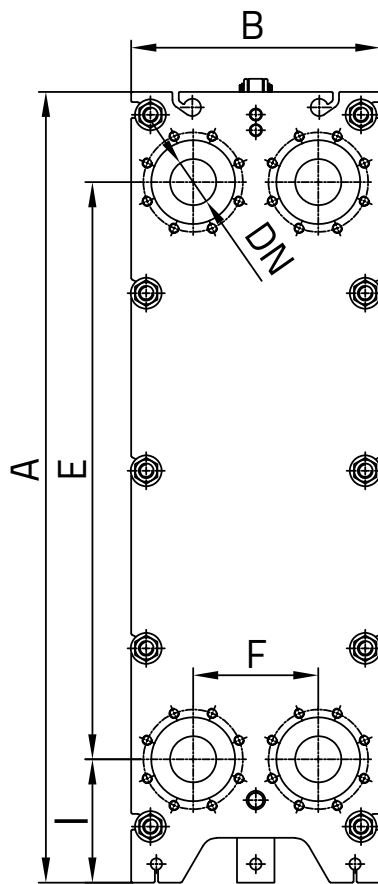


Gamma Prodotti	Product Range	P270+		
Area di scambio [m ²]	Exchange area [m ²]	0,273		
Larghezza [mm]	Width [mm]	320		
Altezza [mm]	Height [mm]	1071		
Diametro connessioni	Connections diameter	DN80 3"		
Capacità canale [l]	Channel capacity [l]	0,68		
Quota di serraggio [mm]*	Tightening quote [mm]*	3		
Peso piastra (con guarnizione) [Kg]*	Plate weight (with gasket) [Kg]*	1,321		
Angolo di corrugazione	Corrugation angle	A/B		
Portata max d'acqua [m ³ /h]	Max. water flowrate [m ³ /h]	110		
PS=> Pressione max di esercizio [bar]	PS=> Max working pressure [bar]	10	16	25

* standard AISI316L 0,5mm

DN32	DN50	DN65	DN80	DN100	DN150	DN200
------	------	------	------	-------	-------	-------

Tutti i dati e disegni nel presente documento possono subire variazioni senza preavviso e non sono vincolanti per il produttore.
 All data and drawings herewith described can be changed without prior notice and are not binding for the manufacturer.



	S270+				
A	1270				
B	400				
E	927				
F	201				
I	198				
Np max	41	71	101	151	251
D max	485	485	625	855	1315
DN	DN80 3"				

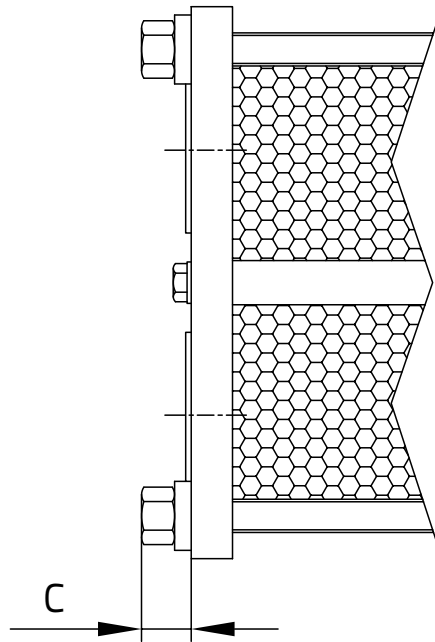
Ingombro delle connessioni (C) / Connections dimensions (C)	
A-A B-B U-U	36
C-C E-E V-V	36

CONNESSIONI FLANGIATE ISO
ISO STUDDED PORTS

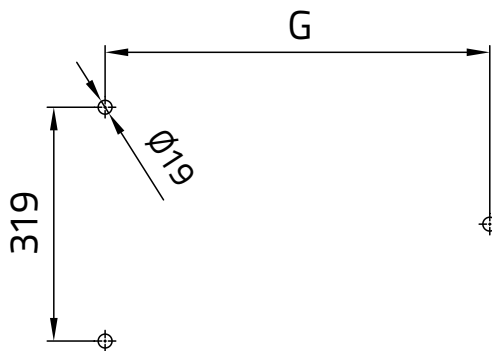
A/B/U

CONNESSIONI FLANGIATE ANSI
ANSI STUDDED PORTS

C/E/V



ANCORAGGIO A TERRA (G) / GROUND ANCHORING (G)



	PS 10	PS 16	PS 25
S110+			
Max 41p	578	583	588
Max 71p	578	583	588
Max 101p	718	723	728
Max 151p	948	953	958
Max 251p	1408	1413	1418

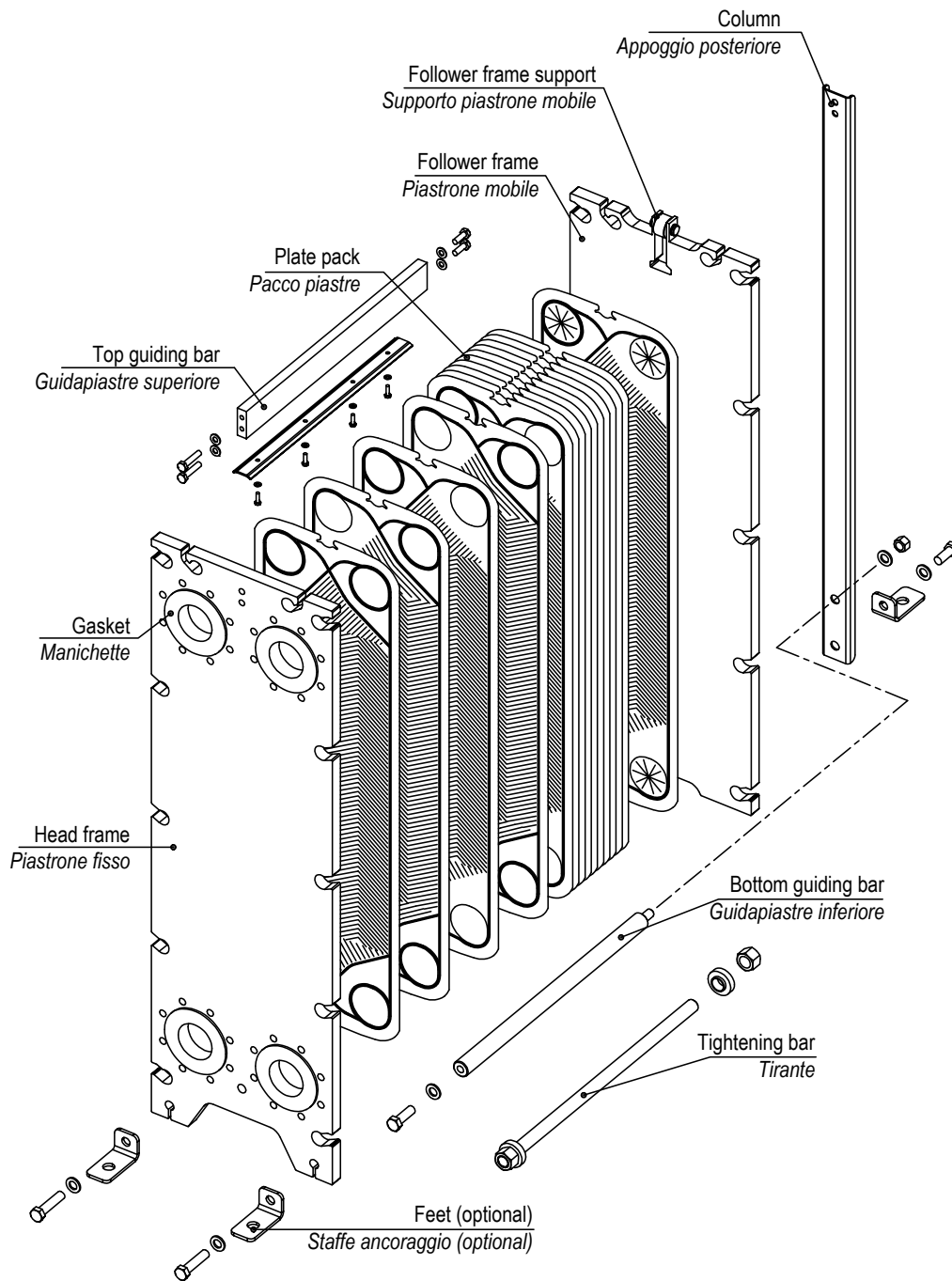
Tutte le dimensioni sono in mm.
All dimensions are in mm.

		S270+
Piastr Plates	AISI 304	●
	AISI 316L	●
	254 SMO	●
	Titanio / Titanium	●
Guarnizioni Gaskets	NBR	●
	EPDM Prx.	●
	FPM	●
	HNBR	●
Telai Frames**	Acciaio Carbonio / Carbon steel	●
	Acciaio inox / Stainless steel	
Attacchi Connections **	A / C (Rubber lined)	●
	B / E (AISI316L lined)	●
	U / V (Unlined)	●

Materiali guarnizioni e temperature massime Gaskets material maximum temperatures		
NBR	-20 °C	110 °C
EPDM Prx.	-20 °C	160 °C
FPM	-20 °C	200 °C
HNBR	-20 °C	160 °C

*Le temperature devono essere considerate non applicabili in tutte le condizioni di lavoro.
The temperatures must be considered not applicable in all working conditions.

** Per configurazioni non standard contattateci.
For non-standard configurations please contact us.



CERTIFICATIONS APPROVALS



• ACS
Attestation de Conformité Sanitaire

• OHSAS 18001
Occupational Health and Safety

• ISO EN 9001:2015
European Quality Certificates

• PED 2014/68/UE
Pressure Equipment Directive
Module B,D1 & D (up to Risk Cat. IV)



• WRAS
EPDMprx gasket compound approved



• ISO 14001
Environmental Management

